



Diaphragm Pumps for Air, Gases and Vapours



LABOPORT® Mini Diaphragm Vacuum Pumps

Technical features:

- 100% oil-free transfer
- Pure transferring and evacuation of gases
- Version for slightly aggressive or corrosive gases and vapours
- Maintenance-free
- Environmentally friendly
- High level of gas tightness.

Series LABOPORT® N 938.50 KN.18 Pumps

Series N 938.50 diaphragm pumps are double-head, dry-running devices used in a wide range of laboratory applications. They transfer and pump down without contamination. The pumps are equipped with parallel and series connection for the pump heads - resulting in a high pneumatic performance, a durable product and compact size. Special valves ensure that the product can cope easily with vapour and condensation. The pumps are available in various versions differing in the materials which contact the media.

Material in contact with the pumped media

Type/Order No.	Pump head	Diaphragm	Valves
N 938.50 KN.18	PPS	EPDM	EPDM

Technical data: N 938.50 KN.18

Delivery (l/min) ¹⁾	32
Ultimate vacuum (mbar abs.)	12
Operating pressure (bar g)	0.5
Connectors for tube (mm)	ID 10
Permissible gas and ambient temperature	+5...+40 °C
Mains	230V/50Hz
Motor protection	IP 20
Power P ₁	110 W
Operating current	0.6 A
Weight	6.8 kg
Dimensions LxHxW (mm)	317/212/110
With thermal switch and power fuse	

Motors with other voltages and frequencies on request.

¹⁾ at atm. pressure

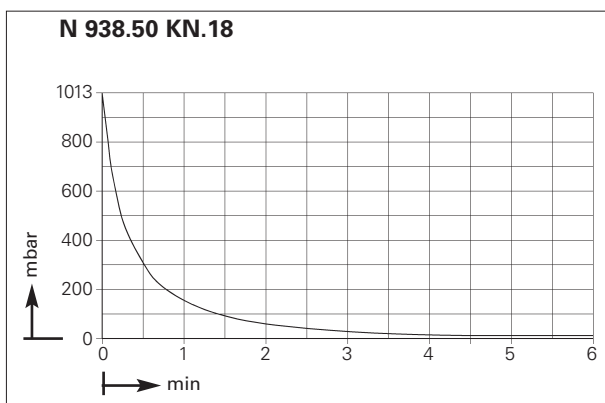
Accessories and spare parts

Description	Details	Order No.
Silencer	G 1/8	007006
Hose connector	G 1/8, PVDF for tube ID 10	112004
Fine control valve with vacuum gauge	suction side	112432
Spares kit	for N 938.50 KN	124808

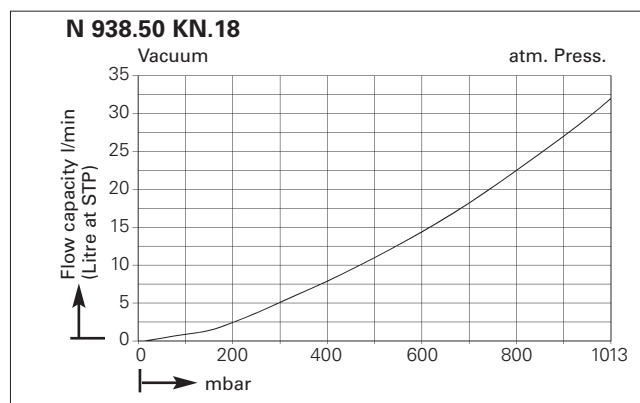


Dimensions and performance characteristics

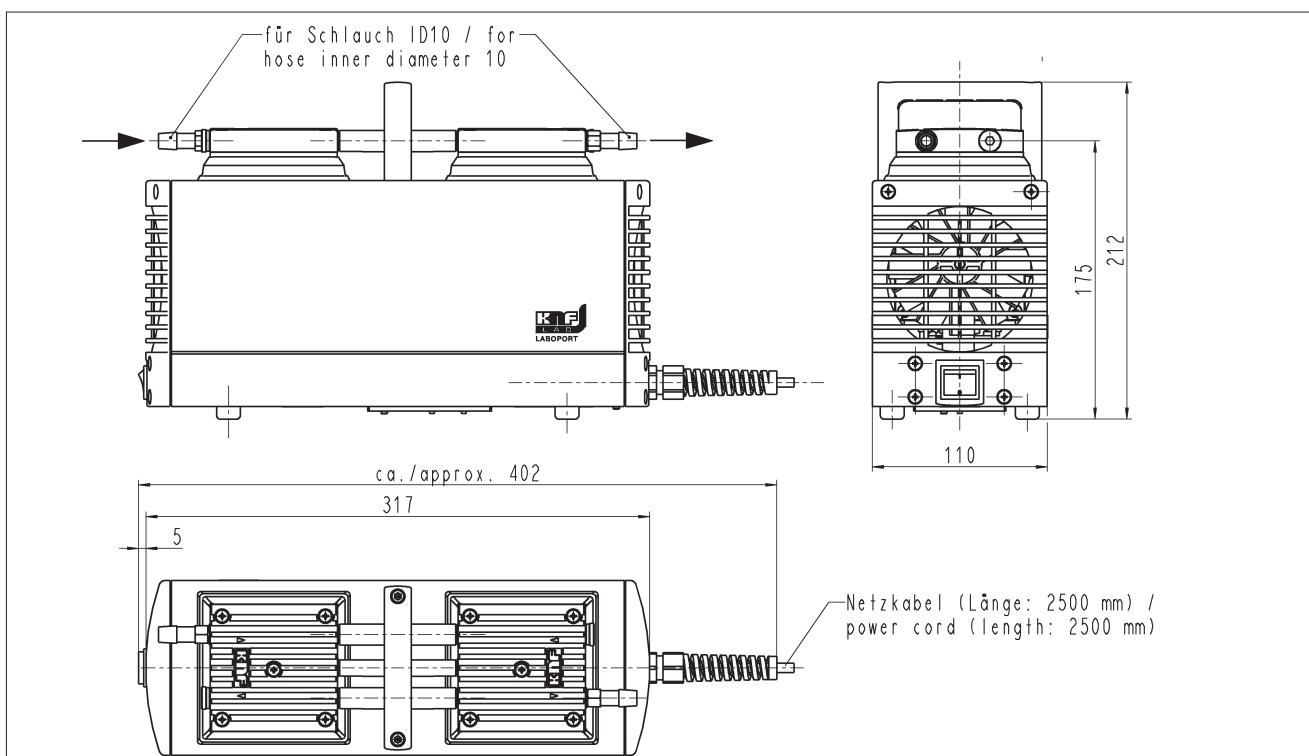
Pump down time for 10 l receiver



Performance



Dimensions (mm)





WolfLabs

Pricing on any accessories shown can be found by keying the part number into the search box on our website.

The specifications listed in this brochure are subject to change by the manufacturer and therefore cannot be guaranteed to be correct. If there are aspects of the specification that must be guaranteed, please provide these to our sales team so that details can be confirmed.

www.wolflabs.co.uk

Tel : 01759 301142

Fax : 01759 301143

sales@wolflabs.co.uk

Please contact us if this literature doesn't answer all your questions.